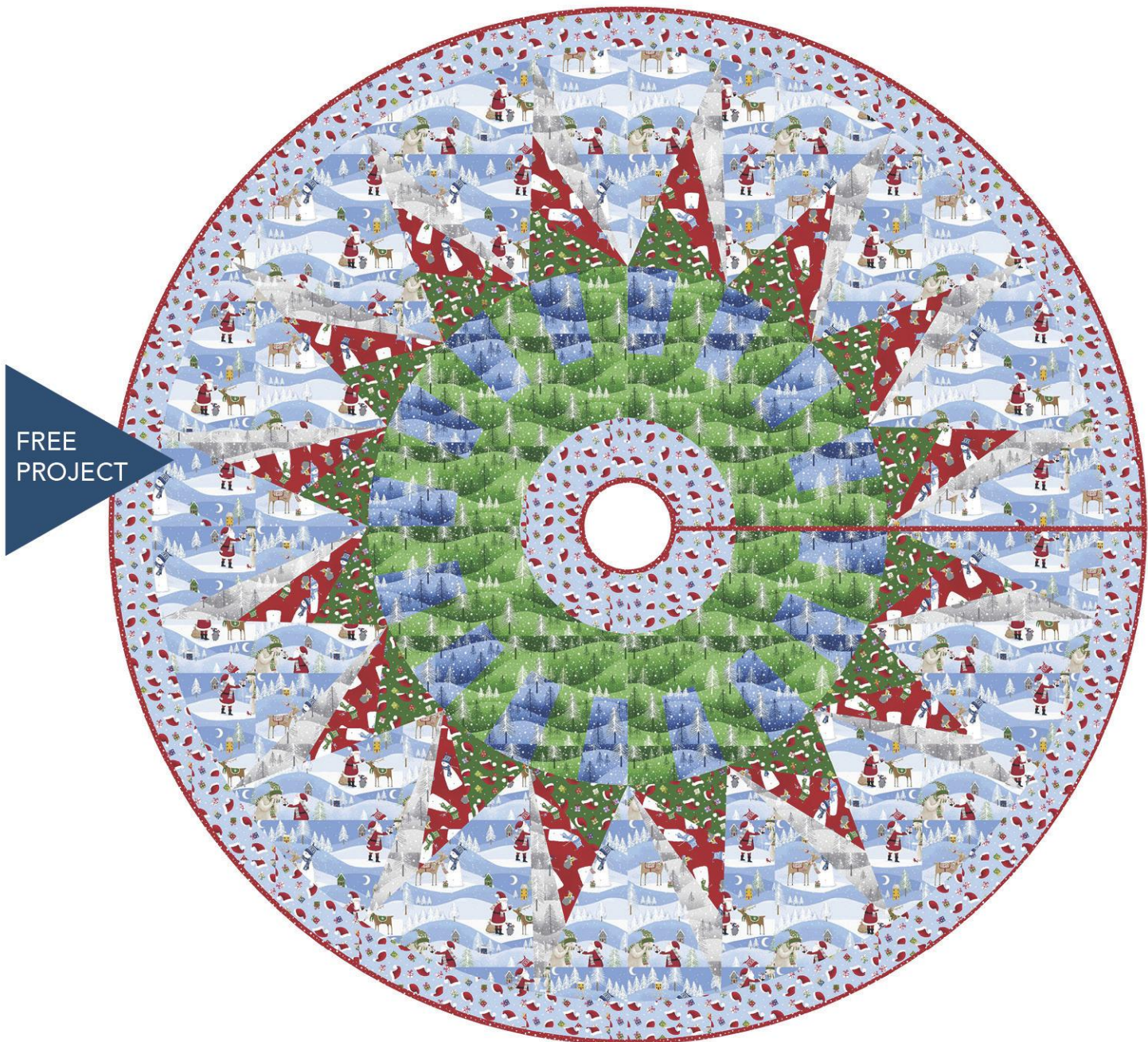


Frosted Pines Tree Skirt

Designed by Stacey Day

Featuring Santa's Little Helpers by Whistler Studios

SIZE: 60" DIAMETER



THIS IS A DIGITAL REPRESENTATION OF THE QUILT TOP, FABRIC MAY VARY.

PLEASE NOTE: BEFORE MAKING YOUR PROJECT, CHECK FOR ANY PATTERN UPDATES AT WINDHAMFABRICS.COM'S FREE PROJECTS SECTION.



Frosted Pines Tree Skirt

KEY	FABRIC	SKU	YD	CUTTING INSTRUCTIONS
A		42934-1 Blue	1 3/4	(12) Template 3 (4) Template 4 right side up (4) Template 4 right side down
B		42935-3 Red	2/3	(16) 4 1/2" x 9 1/2"
C		42936-1 Blue	3/8	(16) 3 3/4" x 6"
D		42936-2 Grey	7/8	(16) 3 1/2" x 13 3/4"
E		42936-4 Green	37/8	(4) Template 2 (16) 3 3/4" x 6"
F		42937-1 Blue	1	(4) Template 1 (8) Template 5
G		42937-4 Green	1/2	(16) 4 3/4" x 7 1/8"
H		42938-3 Red	3/4	2 1/4" bias binding - total of 310" of binding required
		Backing	3 2/3	
				66" x 66" piece of batting

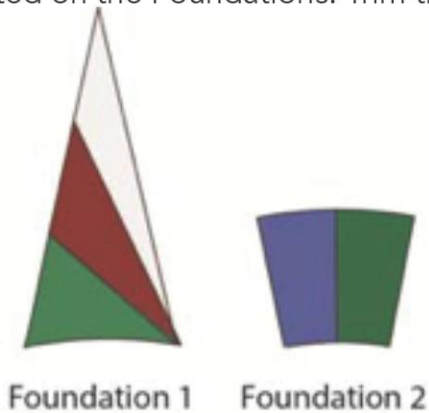


Frosted Pines Tree Skirt

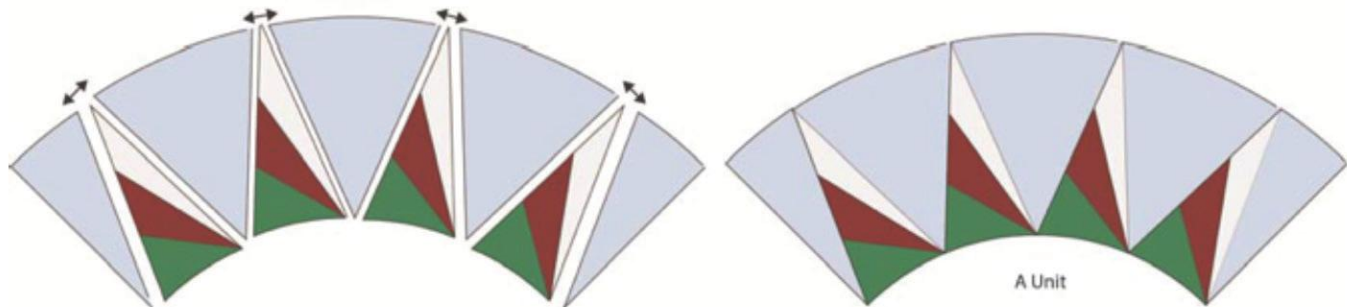
Sewing Instructions:

All seam allowances are 1/4". Pieces are sewn right sides together. Press seams as directed. This pattern assumes a basic knowledge of paper piecing. For a free tutorial visit staceyinstitches.com/tutorials

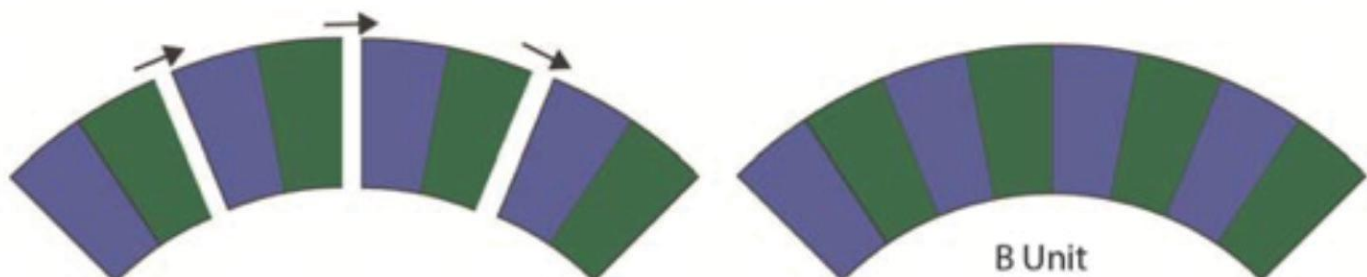
1. Complete the (16) Foundation 1 and Foundation 2 pieces in order using the fabrics and sizes listed on the Foundations. Trim the foundations on the outside solid line. Remove the paper.



2. Sew the Foundation 1 and Template 3 pieces together into (4) arcs. Press towards the Template 3 pieces. Use a right and left Template 4 piece on either end of each arc to make (4) A Units.



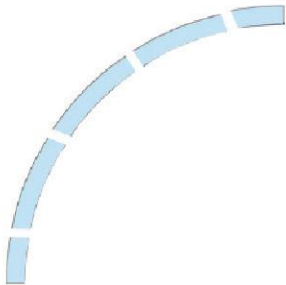
3. Sew the Template 2 pieces together into pairs. Sew the pairs together into (4) B Units.





Frosted Pines Tree Skirt

4. Sew the Template 5 pieces together in pairs to make (4) C Units.

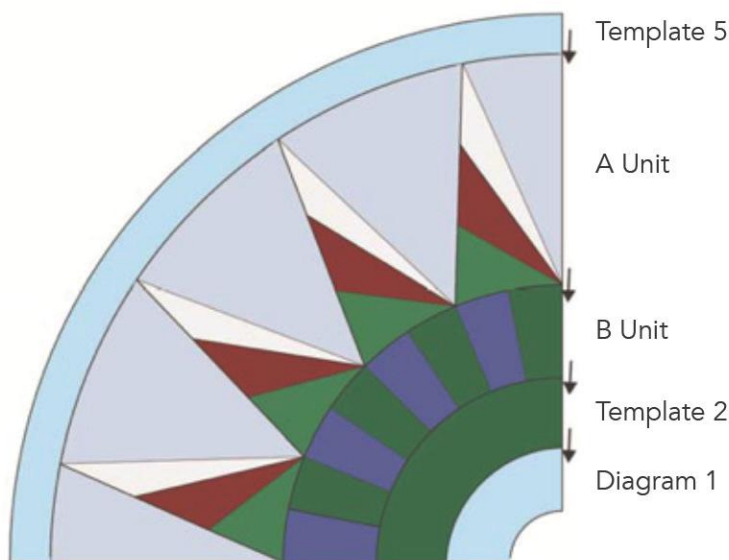


5. Sew the Template 2 pieces to the top of the Template 1 pieces, matching ends and centers. Press towards Template 1.

6. Sew the B Units to the top of the Template 2 pieces, matching ends and centers. Press towards Template 2.

7. Sew the A Units to the top of the B Units, matching ends and centers. Press towards the B Units.

8. Sew the C Units to the top of the Unit A pieces, matching ends and centers. Press towards the A Units.



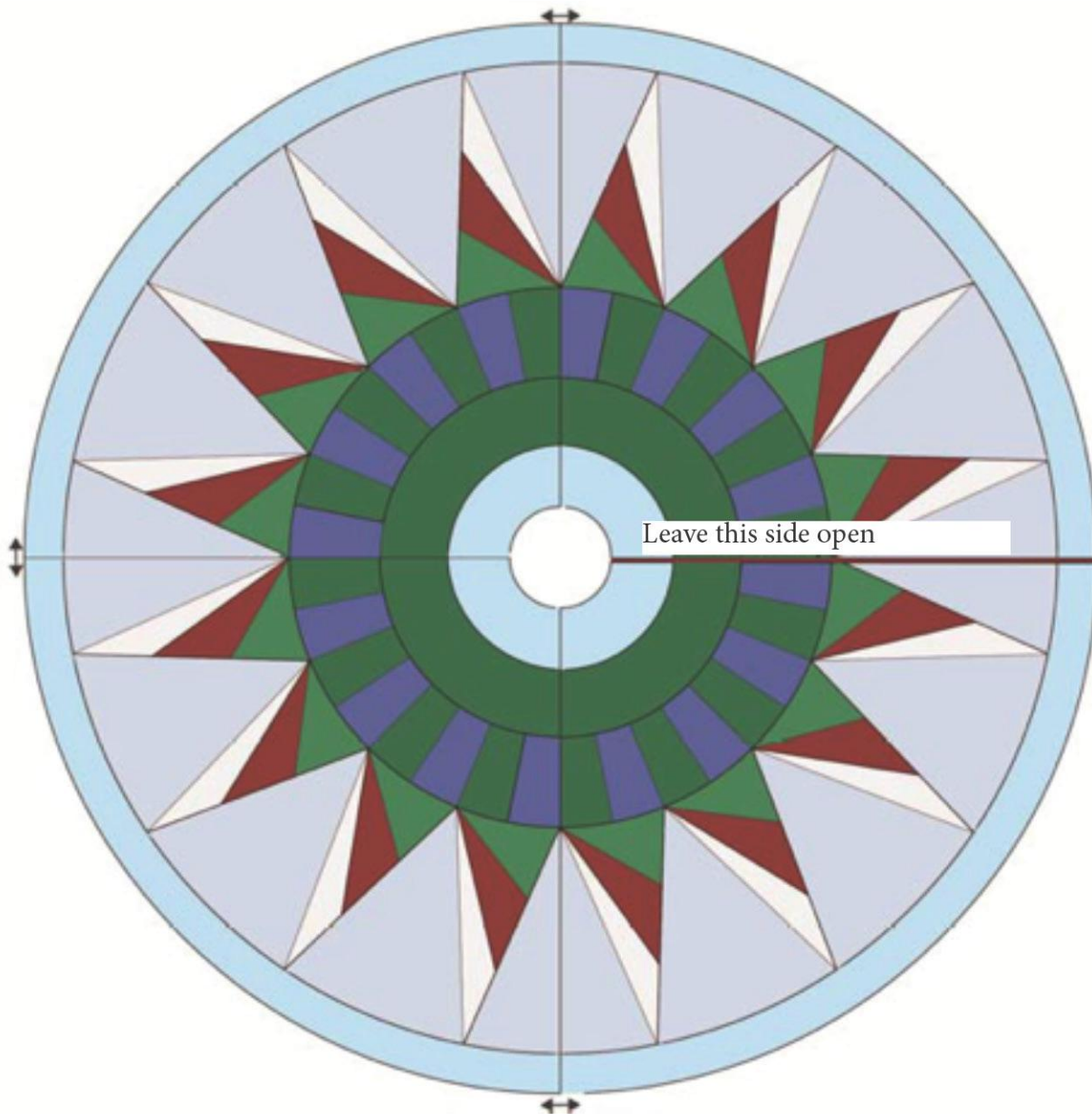
Finishing

9. Sew the quarters together into (2) halves.

10. Sew the halves together on one side only.



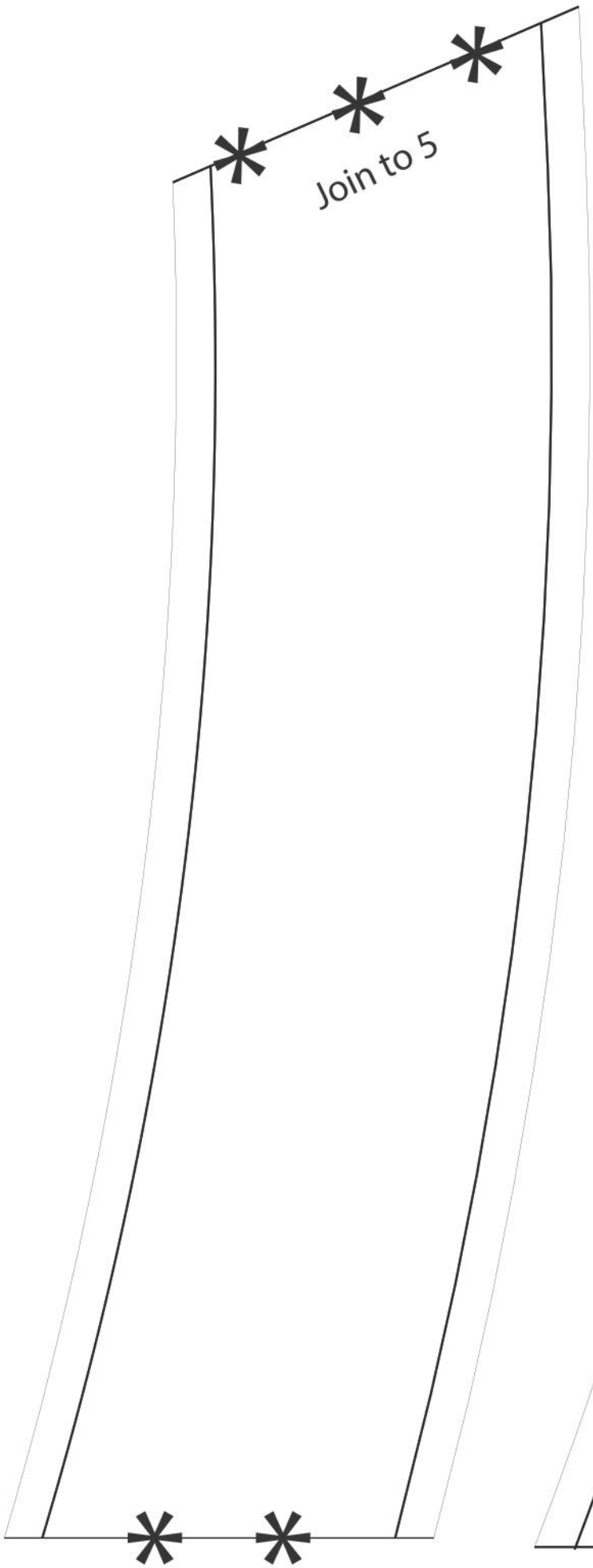
Frosted Pines Tree Skirt



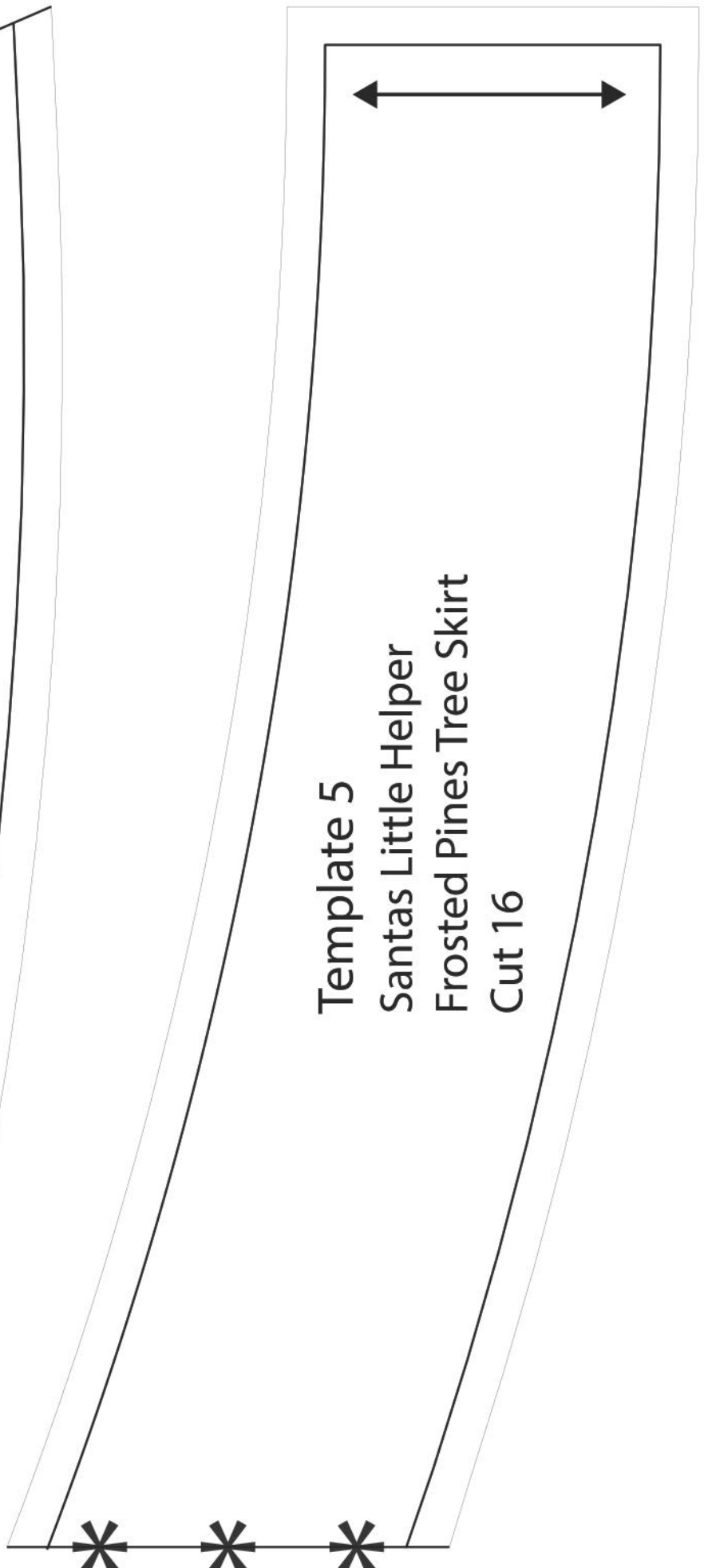
11. Make a backing approximately 66" x 66" from the remainder of **Fabric I**.

12. Layer the backing right side down, batting, and tree skirt top right side up, easing so that the open raw edges of the tree skirt top meet, but do not overlap. Baste the layers together and quilt as desired. Trim excess batting and backing around the outside circle, between the raw edges, and the inside circle.

13. Piece the 2 1/4" **Fabric H** binding strips using diagonal seams to make a bias binding. Sew the binding around the entire outside, inside, and open side of the tree skirt. Turn the binding to the back and secure in place by hand or machine. Label and enjoy.



Join to 5



Template 5
Santas Little Helper
Frosted Pines Tree Skirt
Cut 16

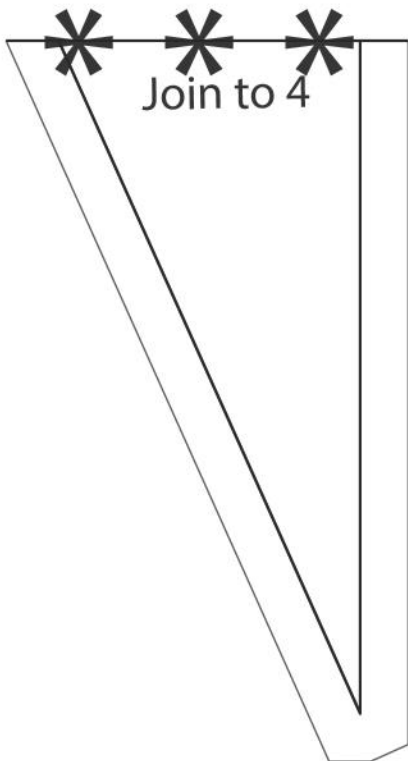
Template 4

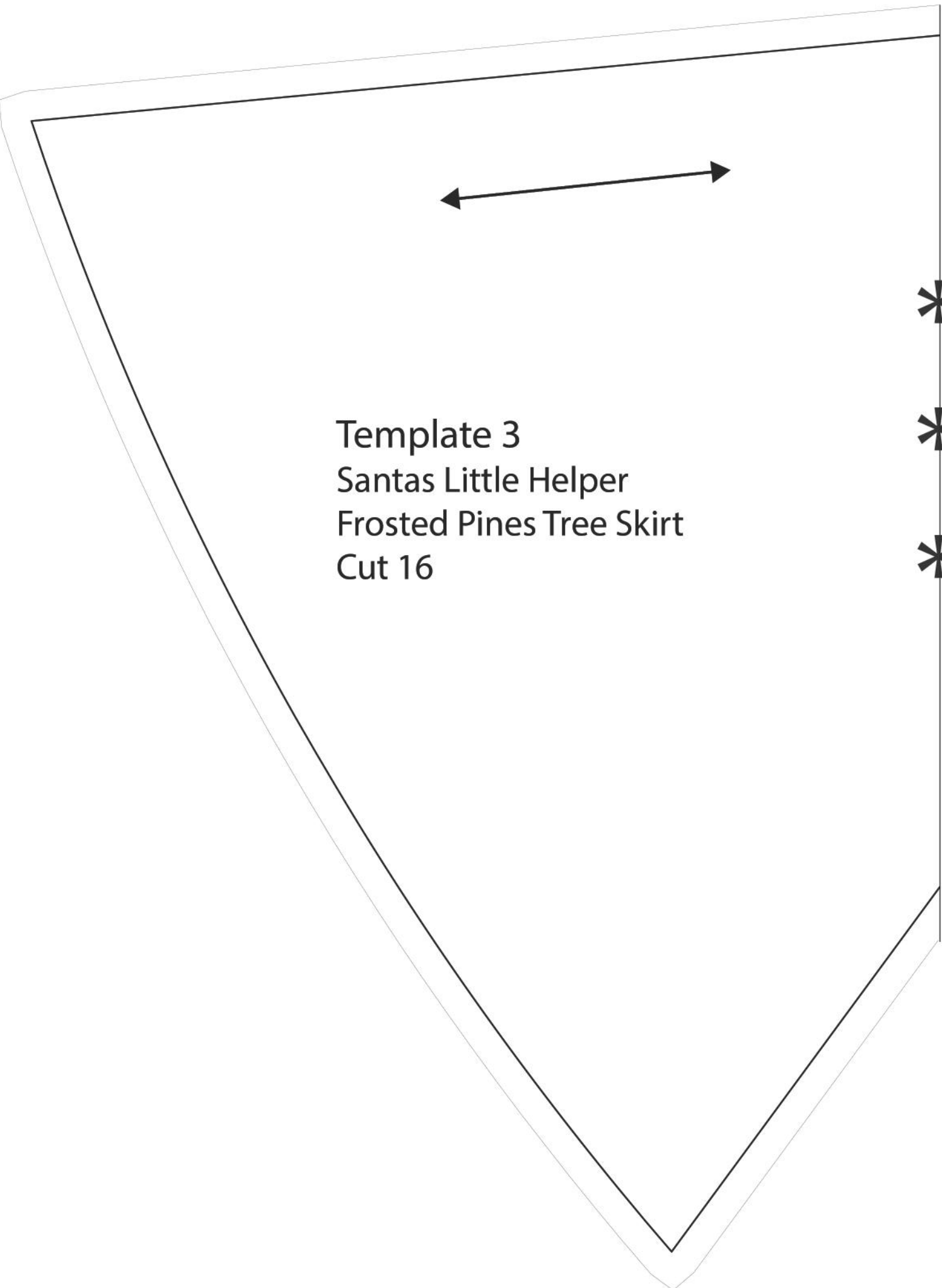
Santas Little Helper

Frosted Pines Tree Skirt

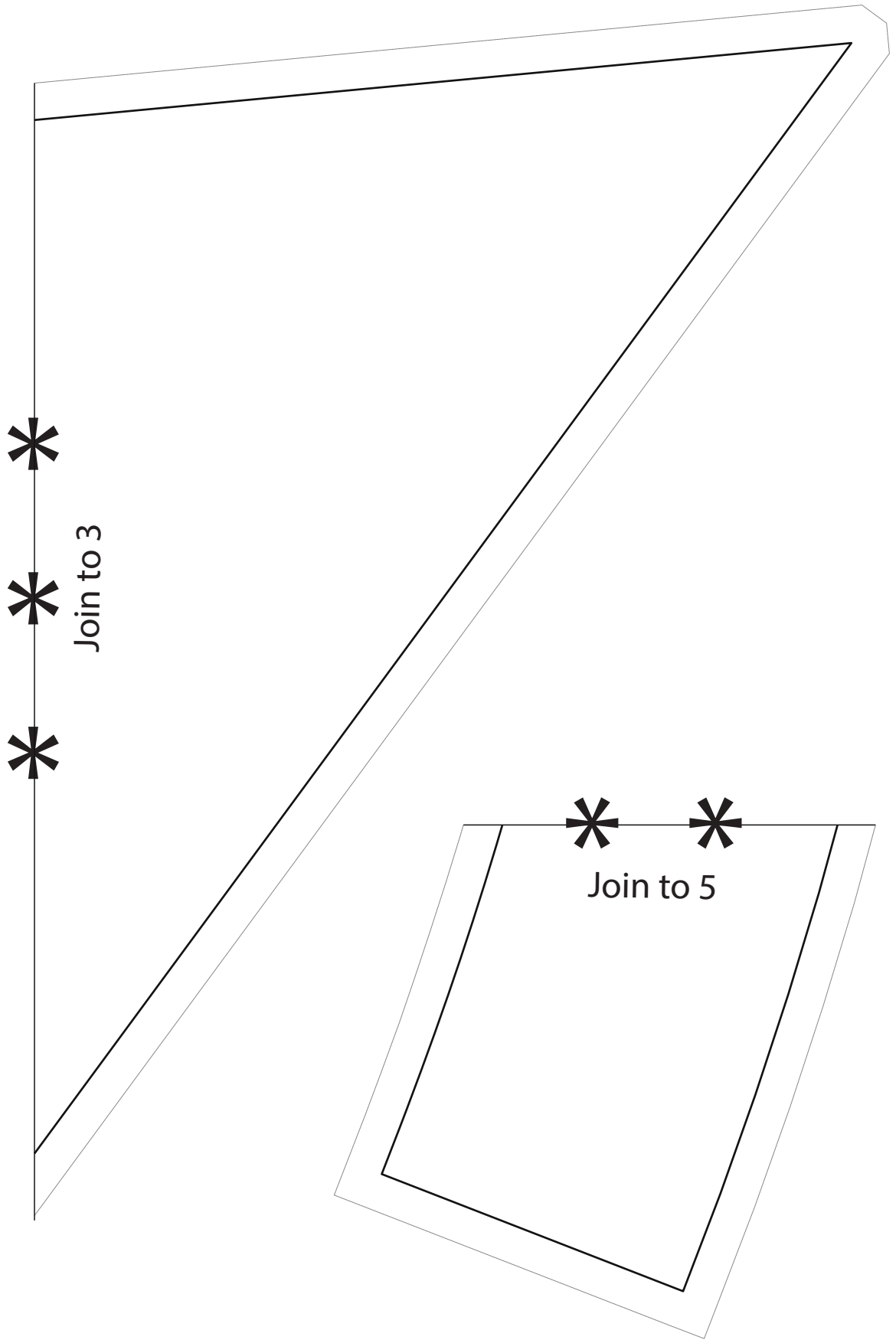
Cut 4 Right Side Up

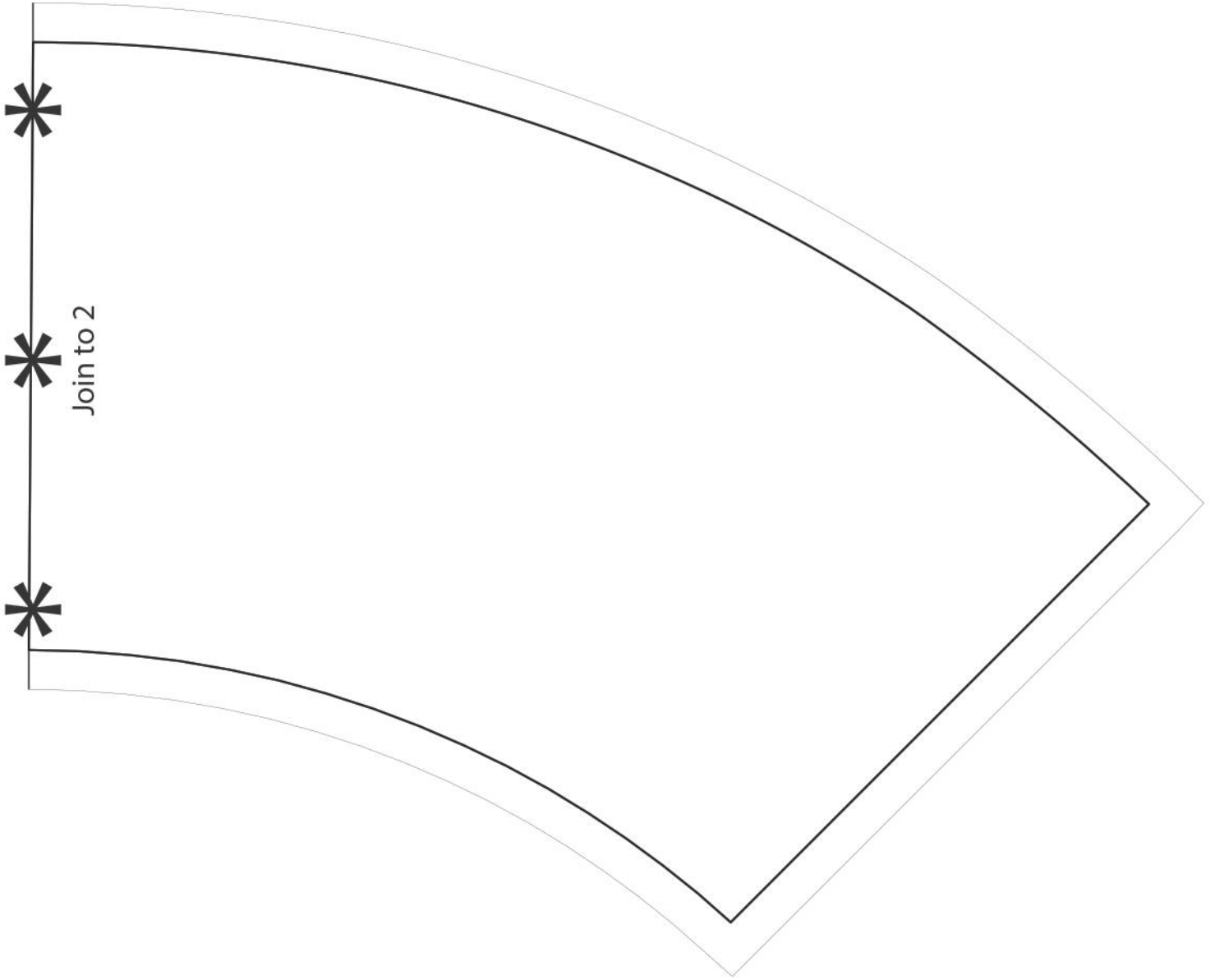
Cut 4 Right Side Down

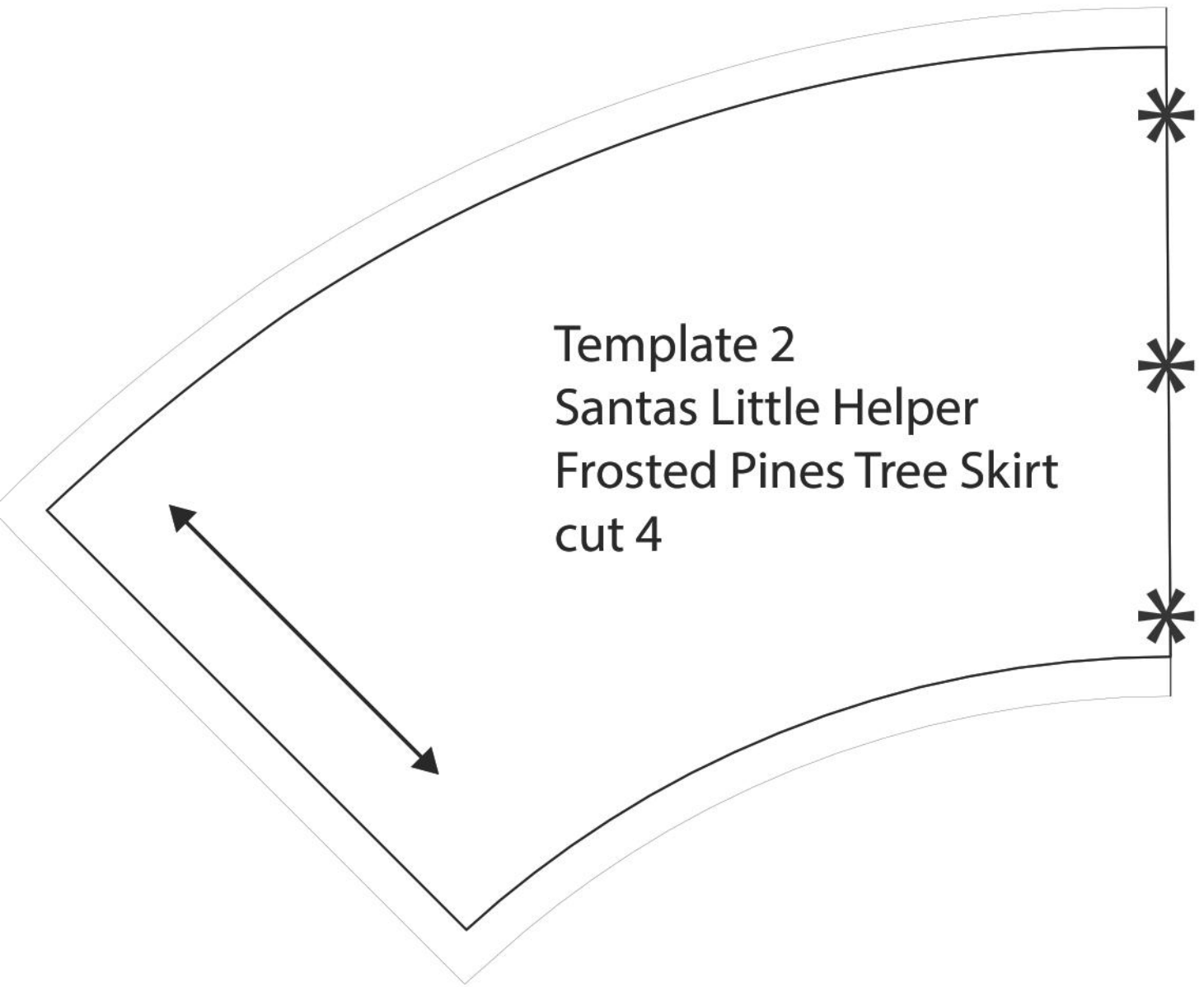




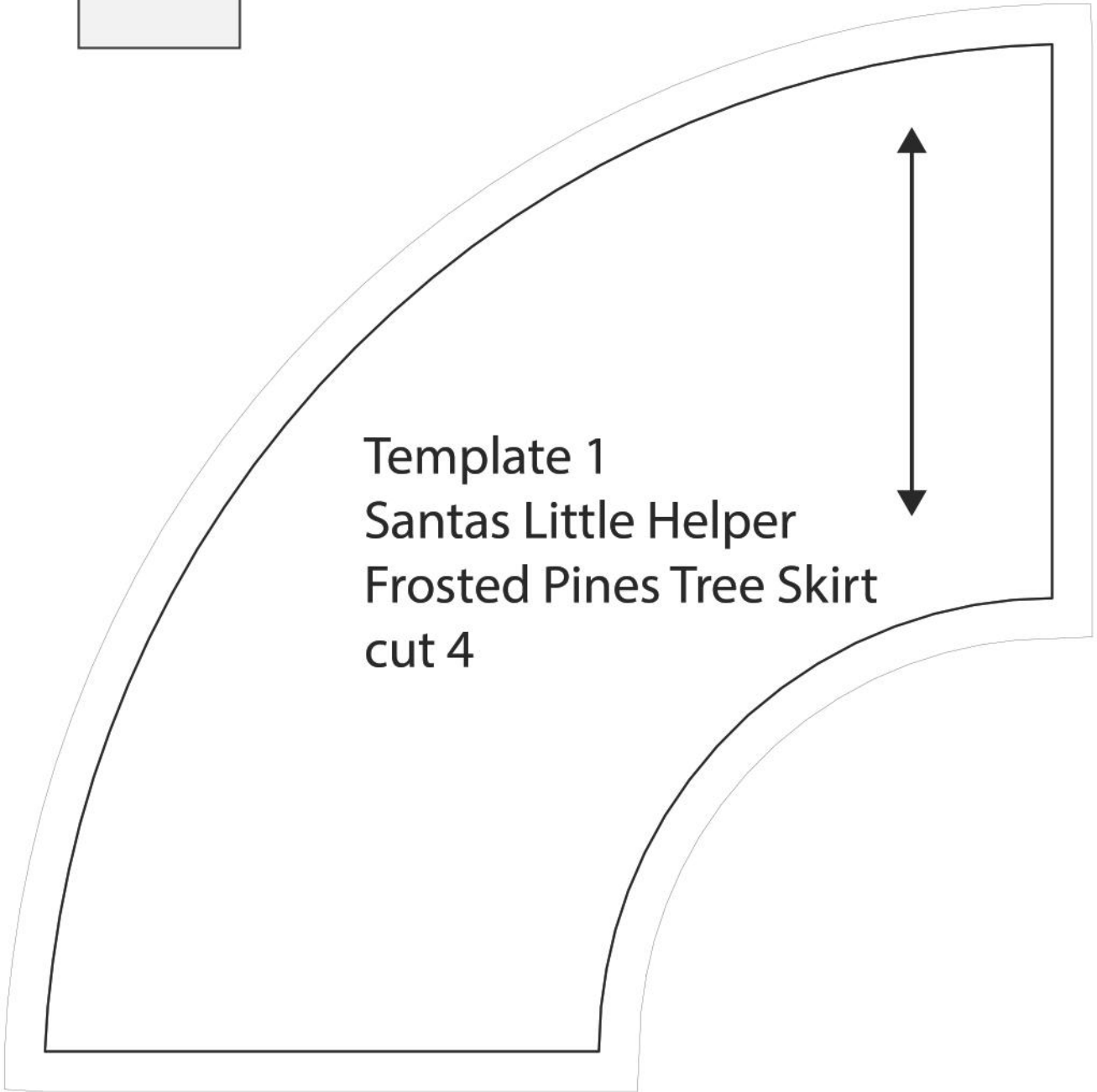
Template 3
Santas Little Helper
Frosted Pines Tree Skirt
Cut 16





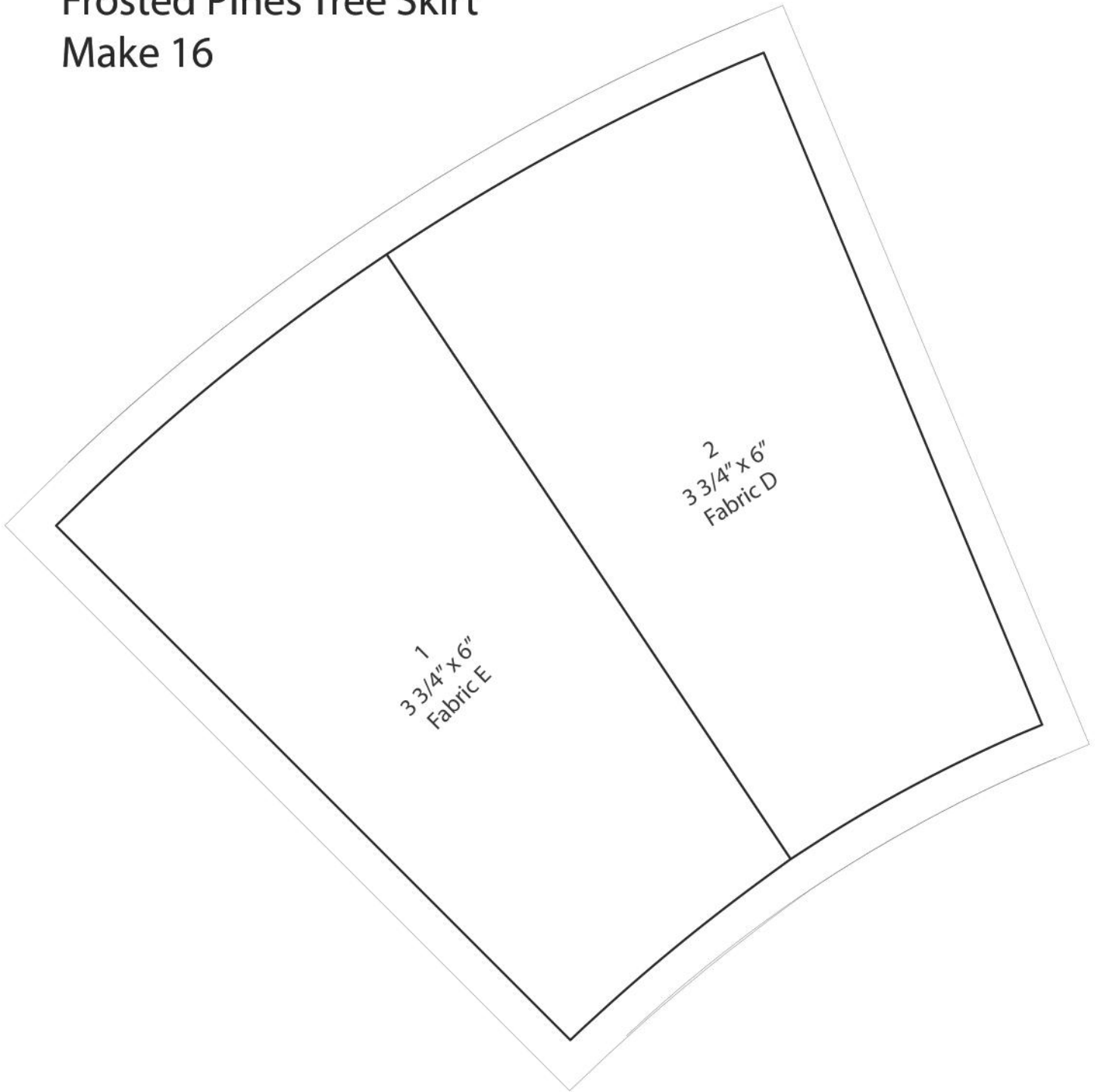


Template 2
Santas Little Helper
Frosted Pines Tree Skirt
cut 4



Template 1
Santas Little Helper
Frosted Pines Tree Skirt
cut 4

Foundation 2
Santas Little Helper
Frosted Pines Tree Skirt
Make 16



Foundation 1
Santas Little Helper
Frosted Pines Tree Skirt
Make 16

